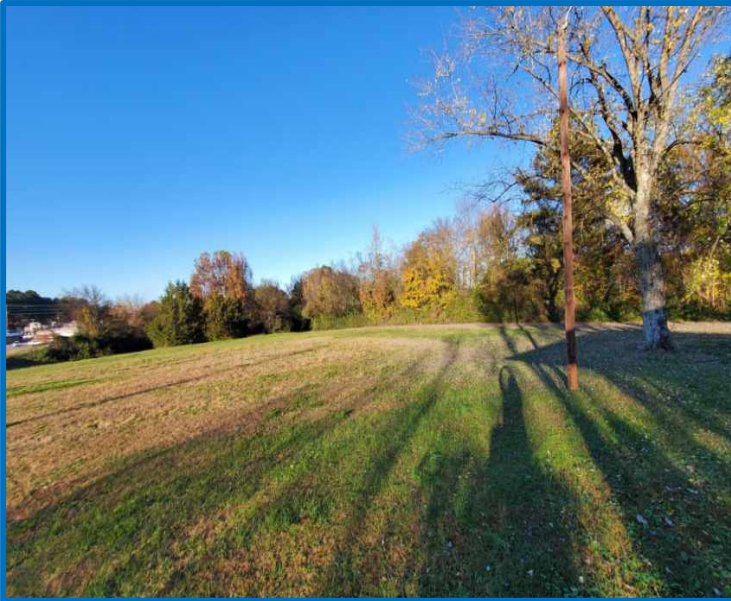
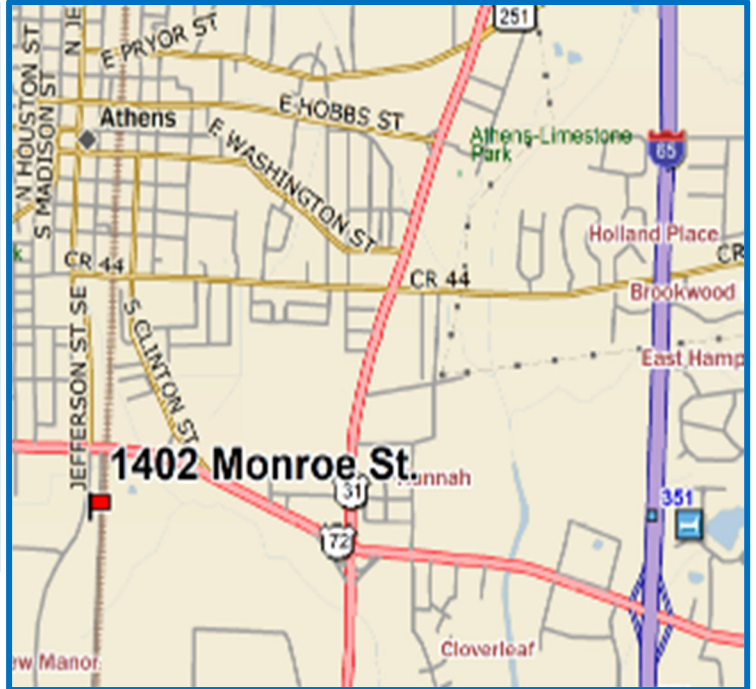


# Land for Sale

**1402 Monroe Street, Athens AL 35611**



## *Location*

**On Jefferson St right off Hwy 72  
Approximately 2 miles from I-65 &  
Downtown Athens**

## *Property Highlights*

- **Ideal Commercial Development Property**
- **Approximately 3 Acres**
- **City of Athens, Zoned B-2 (General Business District)**
- **Over 700ft of Road Frontage on Jefferson St**
- **Also includes a Single Family Home and Outside Storage Building**

## *Sale Price*

**\$750,000**

**Sharita Chalmers Adams – Call or Text: (615) 294-6884**

2311 Market Place, Suite B, Huntsville AL 35801

[Sharita@PaladinGroupAL.com](mailto:Sharita@PaladinGroupAL.com)

[www.paladingroupal.com](http://www.paladingroupal.com)



While data presented herein has been obtained from sources deemed to be reliable, no warranty is made to the accuracy or completeness of such information, and it is subject to changes in price, other conditions, or withdrawal without notice.

# DEMOGRAPHIC SUMMARY

1402 S Monroe St, Athens, Alabama, 35611

Ring of 3 miles

## KEY FACTS

21,347  
Population



9,159  
Households

41.1  
Median Age

Median Age

\$40,775  
Median Disposable Income

Median Disposable Income

## EDUCATION

14%  
No High School Diploma

31%  
High School Graduate



28%  
Some College

27%  
Bachelor's/Grad/Prof Degree



## INCOME



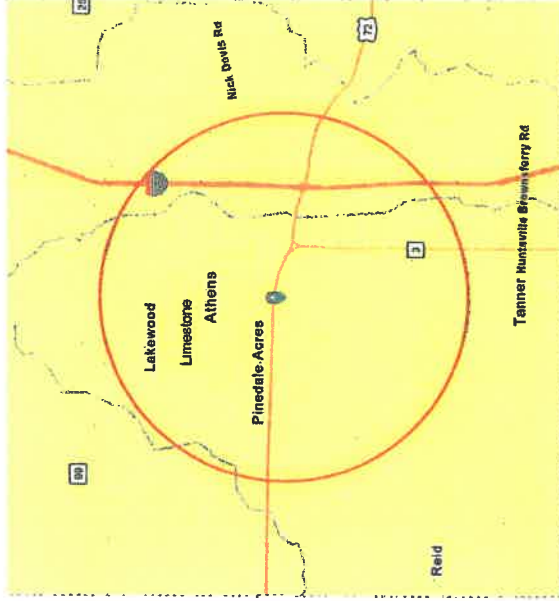
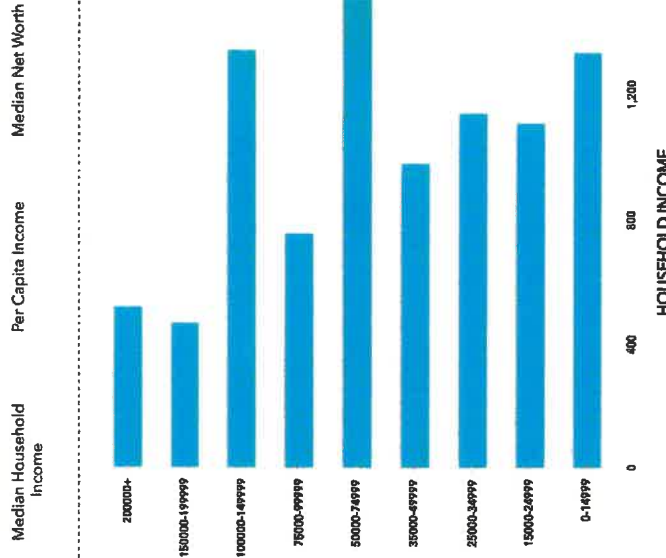
\$50,171  
Median Household Income



\$31,965  
Per Capita Income



\$78,809  
Median Net Worth



## EMPLOYMENT

White Collar 58%

27%

15%

4.9%  
Unemployment Rate

Unemployment Rate